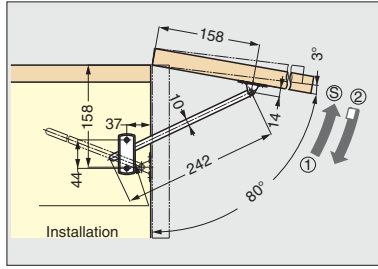


# LID STAY

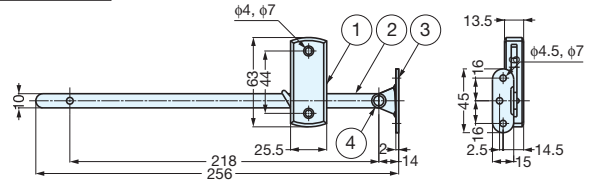


**KLS**



- Opening angle 80°.
- Lift up the lid to release.
- Easy installation - position marked on body.
- Right side installation only.

No.	Part Name	Material	Finish
①	Body	Polyamide	White
②	Arm	Steel	Nickel
③	Mounting Plate	Steel	Nickel
④	Spring	Steel	-



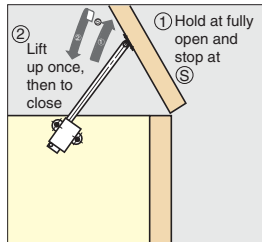
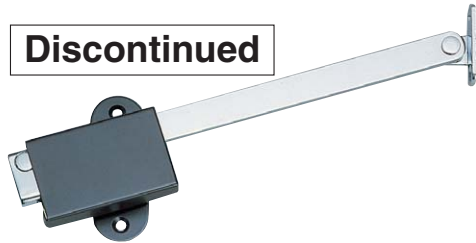
Item No.	Load Capacity (kg)	Door Height (mm)	Weight (g)	Box (pcs)	Corton (pcs)
KLS	8	Max 300	85	20	200

# LID STAY

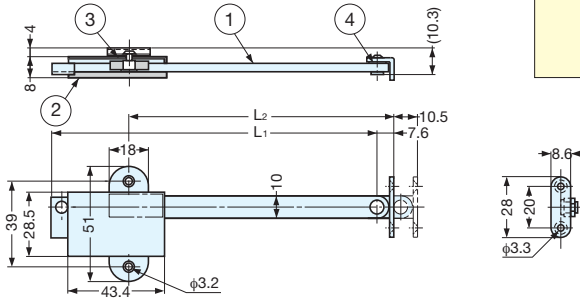


**S-55**

**Discontinued**



- Top opening flap only.
- Left side installation only.



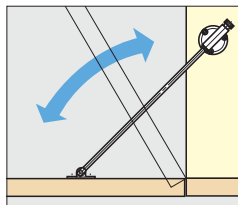
No.	Part Name	Material	Finish
①	Arm	Steel	Chrome
②	Body		Brown
③	Washer	Polyamide	-
④	Washer		-

Item No.	L1	L2	Weight (g)	Box (pcs)	Corton (pcs)
S-55	150	123.5	74	30	120
S-55L	223	196.6	90	30	120

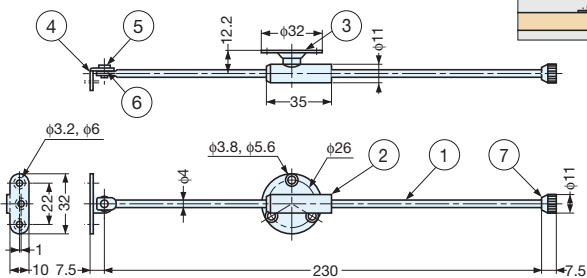
# LID STAY



**S-35**



- Non handed.



No.	Parts Name	Material	Finish
①	Arm	Steel	Chrome
②	Arm guide	Polyamide	Brown
③	Mounting Plate	Steel	Chrome
④	Arm Mounting Plate		
⑤	Rivet	Brass	-
⑥	Washer	Polyamide	-
⑦	Nut	Brass	Nickel

Item No.	Weight (g)	Box (pcs)	Carton (pcs)
S-35	45	60	300