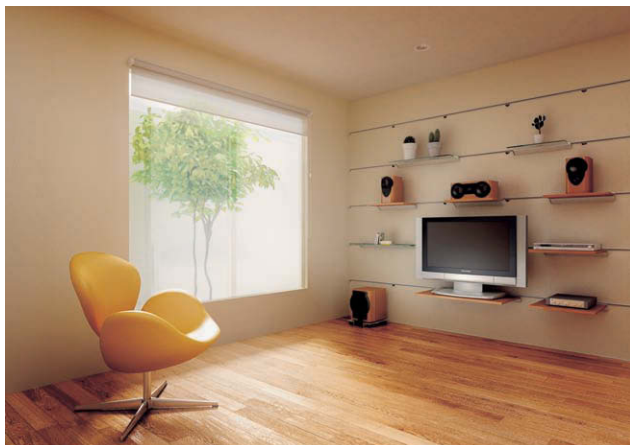
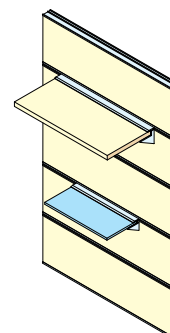
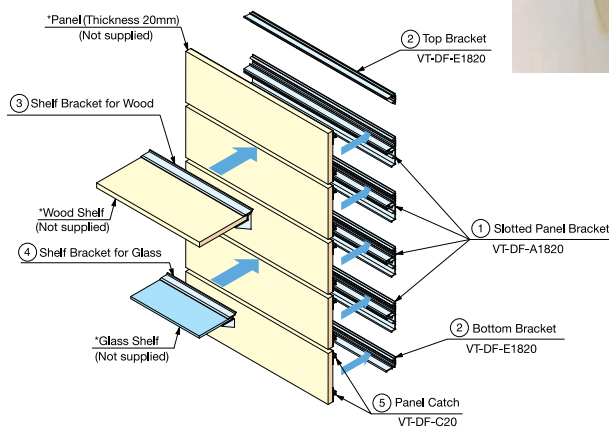
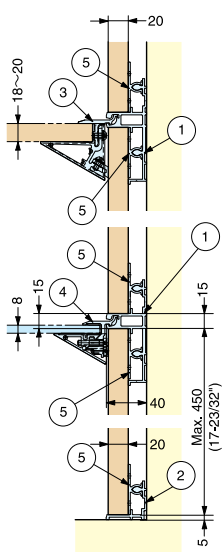


# LEVEL ADJUSTABLE SHELVING SYSTEM

# VT-DF



- Slotted shelving system for flexible layout.
- Shelves can be installed anywhere in the slot.
- Simple and easy installation.
- Use with desired panel to match the surrounding design.
- Snap-in type catch for easy panel installation.
- Panel Size:  
Thickness - 20mm  
Width - Max. 1820 mm (71-21/32")  
Height - 105~450 mm (4-1/8"~17-23/32")  
\* Panel not included.
- Designed to have space behind panels for electric wiring.
- Shelf bracket for wood or glass available. (Shelf board not included.)  
Level adjustable.



No.	Item No.	Part Name	Dimensions	Material	Finish / Color	Length	Panel Thickness	Load Capacity (kg)
①	VT-DF-A1820	Slotted Panel Bracket	 8pcs. of catch ⑤ included.	Aluminum	Anodized	1820mm	20mm	-
②	VT-DF-E1820	Top / Bottom Bracket	 8pcs. of catch ⑤ included.			1820mm	20mm	-
③	VT-DS-X-450 VT-DS-X-800	Shelf Bracket For Wood		Aluminum ABS	Anodized Grey	450mm 800mm	18~20mm	40kg (88 lbs)
④	VT-DS-G-450 VT-DS-G-685	Shelf Bracket For Glass				450mm 685mm	8mm	10kg (22 lbs)
⑤	VT-DF-C20	Panel Catch		Polyacetal	Natural	-	-	-