



ECODRILL



Symbolic image

- Simple hand held tool to drill accurate hole patterns for Blum hinges
- Driven by hand drill
- Variable drilling distance (2–8 mm)
- Assembly on a marking line
- Material: aluminium die casting

Assembly possibilities

AVENTOS HF
AVENTOS HK-XS
CLIP top BLUMOTION
CLIP top
MODUL

Page instructions

Overview – templates	734
Overview – assembly possibilities	736

Application video



Order information

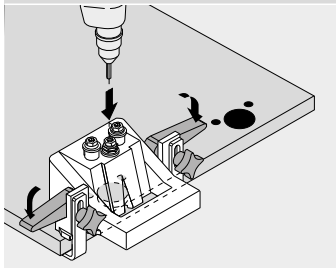
	Description	Part no.
	ECODRILL	M31.1000
Composed of:		
-	1 x Drilling template	
-	2 x Drill bit Ø 8 mm	
-	1 x Fittings drill bit Ø 35 mm	
-	2 x TORX bit	
-	2 x Spacing rings	

a Accessories

	Description	Part no.
	Drill bit Ø 8 mm	M31.ZB08.02
	Fittings drill bit Ø 35 mm	M31.ZB35.02
	Tool set	MZW.1300

Assembly possibilities

AVENTOS HF/AVENTOS HK-XS/CLIP top BLUMOTION/CLIP top/MODUL



Hinge system assembly

- Adjust drilling distance setting
- Mark desired hinge position
- Position ECODRILL on marking line and fix with clamping lever
- Drill hinge drilling pattern using hand drill