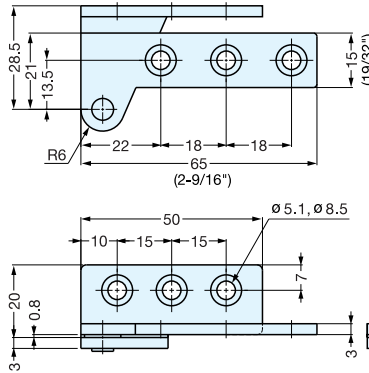


OVERLAY DOOR PIVOT HINGE



PL-65



- Door Size: Max. W450 x H700 x t21mm (W17-23/32" x H27-9/16" x t53/64")
- Door weight: Max. 2.6kg/ pair (5.7lbs/ pair)

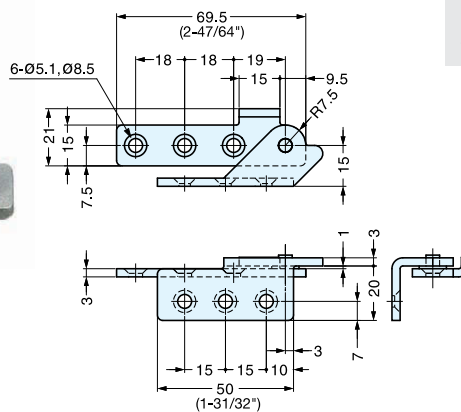
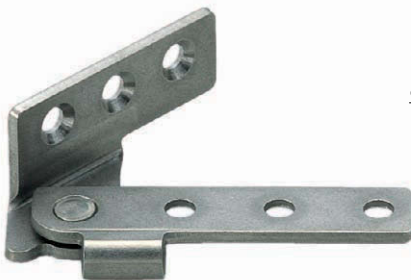
Item No.		Weight (g)	Box (pcs)	Carton (pcs)
Left	Right			
PL-65L	PL-65R	55	40	400

Material	Finish
430 Stainless Steel	Plain

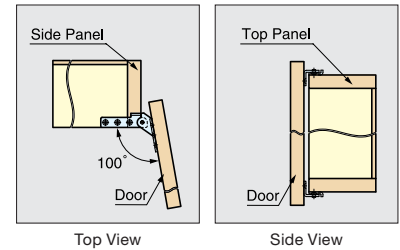
OVERLAY DOOR PIVOT HINGE



PL-100



- Door Size: Max. W300 x H700mm (W11-3/16" x H27-9/16")
- Door Weight: Max.1.8kg/pair (3.9 lbs/pair)



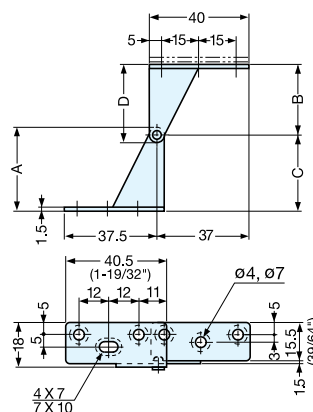
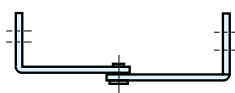
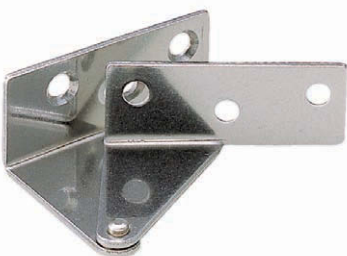
Item No.		Weight (g)	Box (pcs)	Carton (pcs)
Left	Right			
PL-100L	PL-100R	27	100	1000

Material	Finish
430 Stainless Steel	Plain

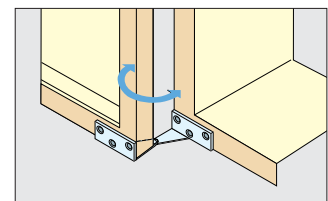
OVERLAY DOOR PIVOT HINGE



WP



- Door Size: Max. W300 x H700mm (W11-3/16" x H27-9/16")
- Door weight: Max. 1.8kg/ pair (3.9lbs/ pair)



Installation

Item No.		A	B	C	D	Weight (g)	Box (pcs)	Carton (pcs)
Left	Right							
WP-1L	WP-1R	34	28	30.5	31	23	100	1000
WP-3L	WP-3R	28	22	24.5	25	21		

Material	Finish
430 Stainless Steel	Plain