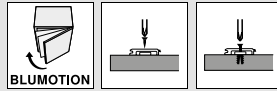




- ▶ BLUMOTION for doors
- ▶▶ BLUMOTION 971A – in adapter plate for overlay application



BLUMOTION 971A – in a cruciform adapter plate

37/32

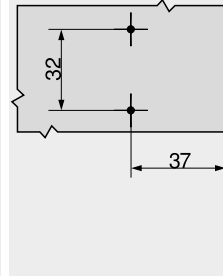
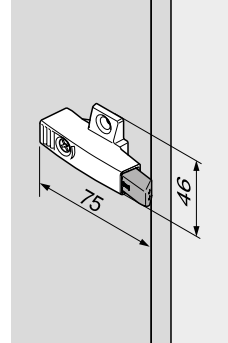


- Fixing with chipboard screws
Ø 3.5 or Ø 4 mm
- Material: zinc
- Colour: nickel plated

Order information

Construction height (mm)	Part no.
25	971A0500
33	971A2500

Planning



BLUMOTION 971A – in a cruciform adapter plate

37/32

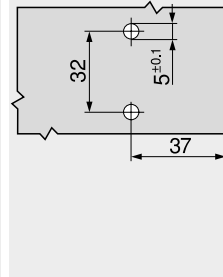
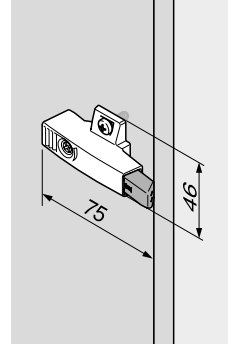


- Fixing with pre-mounted special screws with split dowels (EXPANDO)
- Material: zinc
- Colour: nickel plated

Order information

Construction height (mm)	Part no.
25	971A05E0

Planning



BLUMOTION 971A – in a cruciform adapter plate

9.5/32

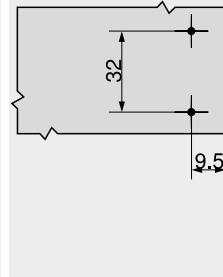
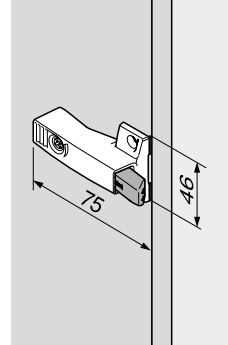


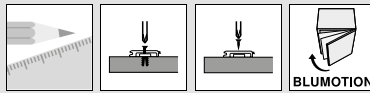
- Fixing with chipboard screws
Ø 3.5 or Ø 4 mm
- Material: zinc
- Colour: nickel plated

Order information

Construction height (mm)	Part no.
25	971A0700

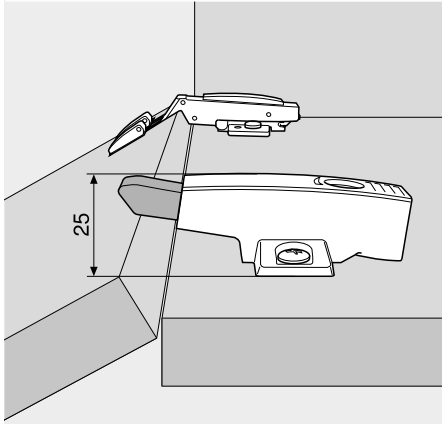
Planning





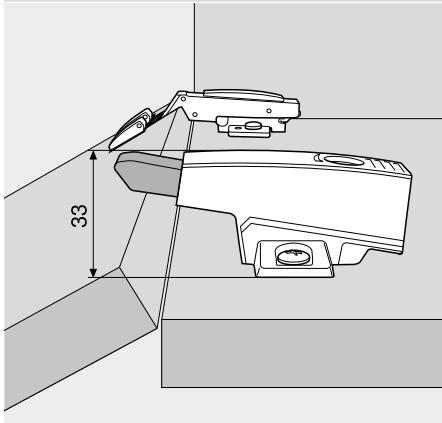
Planning

Construction height 25 mm



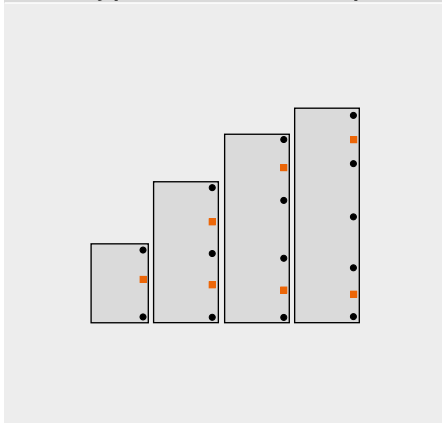
For all hinges with a straight hinge arm and a 0 mm raised mounting plate. Exception: 95° profile door hinge

Construction height 33 mm



For all hinges with a straight hinge and a 3 mm spaced mounting plate. Use also for 95° profile door hinge with 0mm spaced plate.

Assembly position and number required



For optimal BLUMOTION effect, BLUMOTION 971A should be attached to the centre between the hinges. For high and heavy doors, we recommend using an additional BLUMOTION 971A between an additional hinge pair.

Any depth adjustment made to the hinge arm should be mirrored on the 971A, this is easily achieved via a spiral screw depth adjustment feature (+3 to -7 mm).

■	BLUMOTION 971Axxxx
●	Hinges

Page instructions

Overview – BLUMOTION for doors	539
Assembly, removal and adjustment	552
Overview – assembly devices	683
More technical details	774