

## Lift systems



- ▶ AVENTOS HF – bi-fold lift system
- ▶▶ Standard | SERVO-DRIVE



## Wooden fronts and wide alu frames



- Ideal for wall cabinets with divided fronts
- Cabinet height KH 480–1040 mm
- Cabinet width KB up to 1800 mm
- Silent and effortless closing, thanks to **BLUMOTION**
- Light operating forces
- Variable stop
- Tool-free assembly
- 3-dimensional adjustment of both fronts
- Simple, infinitely variable lift mechanism
- Centre hinge with finger safety feature

Webcode  
DQD8YM

**Power factor LF**

Cabinet height KH (mm) x combined weight of both fronts and handle (kg)

**Theoret. cabinet height TKH**

Front height top FHo (mm) x 2 + gaps

We recommend the more powerful lift mechanism for overlapping areas.

- Standard  
 SERVO-DRIVE

## Order information

1	<input type="checkbox"/> Standard <input checked="" type="checkbox"/> SERVO-DRIVE	Lift mechanism set	Part no.
		<b>Power factor LF</b>	
		2600–5500 (1 pc LF 960–2650)	20F2200.05
		5350–10150	20F2500.05
		9000–17250 (3 pc LF 13500–25900)	20F2800.05

## Composed of:

- 1 2 x Lift mechanism (symmetrical)  
– 8 x Chipboard screws Ø 4 x 35 mm

2	<input type="checkbox"/> Standard <input checked="" type="checkbox"/> SERVO-DRIVE	Telescopic arm set	Part no.
		<b>Cabinet height KH (mm)</b>	
		480–570	20F3200.01
		560–710	20F3500.01
		700–900	20F3800.01
		760–1040	20F3900.01

## Composed of:

- 2 2 x Telescopic arm (symmetrical)  
1 Theoretical cabinet height TKH for asymmetrical fronts

3	<input type="checkbox"/> Standard <input checked="" type="checkbox"/> SERVO-DRIVE	Cover cap set	Part no.
		<b>Material</b>	
		Nylon	20F8000
		<b>Colour</b>	
		HGR   SW   TGR	

## Composed of:

- 3a 1 x Cover cap large left  
3b 1 x Cover cap large right  
3c 2 x Cover cap round

3	<input checked="" type="checkbox"/> SERVO-DRIVE	Cover cap set for SERVO-DRIVE	Part no.
		<b>Material</b>	
		Nylon	21F8000
		<b>Colour</b>	
		HGR   SW   TGR	

## Composed of:

- 3a 1 x SERVO-DRIVE cover plate left  
3b 1 x Cover cap large right  
3c 2 x Cover cap round  
3d 2 x SERVO-DRIVE switch  
3e 6 x Blum distance bumper, Ø 5 mm

4	<input type="checkbox"/> Standard <input checked="" type="checkbox"/> SERVO-DRIVE	Mounting plate for telescopic arm	Part no.
		<b>Fixing method</b>	
		Screw-on	175H3100
		EXPANDO	177H3100E
		Knock-in	177H3100

All horizontal steel mounting plates with 0 mm spacing possible

1 Use 2 chipboard screws (609.1x00) per side for wooden fronts

1 Use 2 counter sunk self tapping screws (660.0950) per side for wide alu frames

6	<input checked="" type="checkbox"/> SERVO-DRIVE	SERVO-DRIVE set	Part no.
		<b>Material</b>	
		Nylon	21FA000
		<b>Colour</b>	
		R7037	

## Composed of:

- 6a 1 x Drive unit  
6b 1 x Distribution cable, 1500 mm  
6c 1 x Connecting node  
6d 2 x Cable end protector

For three lift mechanisms or more, we recommend two synchronised drive units

7	<input checked="" type="checkbox"/> SERVO-DRIVE	Blum transformer 24 W	Part no.
		<b>Language package</b>	
		A DE, EN, FR, IT, NL	Z10NE030A
		B DA, EN, FI, NO, SV	Z10NE030B
		C EL, EN, HR, SL, SR, TR	Z10NE030C
		D EN, ES, FR, IT, PT	Z10NE030D
		E CS, HU, PL, SK	Z10NE030E
		F BG, ET, LT, LV, RO, RU	Z10NE030F
		G EN, ES, FR	Z10NE030G
		H EN, ZH	Z10NE030H

Incl. instruction leaflet and installation instructions  
Without flex

## Language package

A DE, EN, FR, IT, NL	E CS, HU, PL, SK
B DA, EN, FI, NO, SV	F BG, ET, LT, LV, RO, RU
C EL, EN, HR, SL, SR, TR	G EN, ES, FR
D EN, ES, FR, IT, PT	H EN, ZH

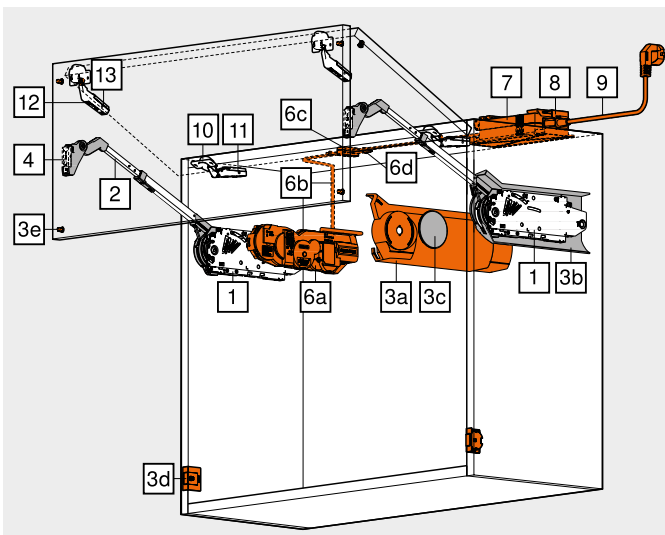
Language descriptions as per ISO-639

8	<input checked="" type="checkbox"/> SERVO-DRIVE	Transformer unit housing	Part no.
		<b>Material</b>	
		Nylon	Z10NG120
		<b>Colour</b>	
		WGR	

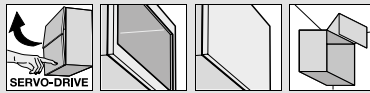
For Blum transformer 24 W

9	<input checked="" type="checkbox"/> SERVO-DRIVE	Flex	Part no.
		<b>Market</b>	
		Europe	Z10M200E
		US, CA	Z10M200U
		BR	Z10M200S.01
		DK	Z10M200D
		AU	Z10M200K
		AR	Z10M200A
		CL	Z10M200L
		ZA	Z10M200Z
		Europe	Z10M200E.OS

1 Without plug



AVENTOS HF – bi-fold lift system <br>Standard | SERVO-DRIVE <<



Lift systems



Wooden fronts and wide alu frames

Webcode  
DQD8YM

Order information

Alternative to 7, 8, 9

– Blum plug-in transformer 12 W

Only suitable for one drive unit

Network adapter	Language package	Part no.	Network adapter	Language package	Part no.
E	A	Z10NA30EAF	E	F	Z10NA30EFF
E	B	Z10NA30EBF	B	A	Z10NA30BAF
E	C	Z10NA30ECF	K	D	Z10NA30KDF
E	D	Z10NA30EDF	U	G	Z10NA30UGF
E	E	Z10NA30EEF			

Network adapter					
E	B	K	U		

Composed of:

- 1 x Blum plug-in transformer 12 W
- Incl. cable, 1120 mm (with distribution cable extendable to max. 2000 mm)
- Other combinations available upon request

<sup>1</sup> See the Information chapter for a detailed market list

10 CLIP top 120° hinge

Boss	Spring	Part no.
INSERTA	Unsprung	70T5590BTL
Screw-on	Unsprung	70T5550.TL

Boss overlay TO (fixed dimension) 11 mm

3 hinges starting at cabinet width 1200 mm and/or 12 kg front weight

4 hinges starting at cabinet width 1800 mm and/or 20 kg front weight

<sup>2</sup> Use chipboard screws (609.1x00) for wooden fronts

<sup>2</sup> Use counter sunk self tapping screws (660.0950) for wide alu frames

Alternative to 10

10 CLIP top 120° special hinge for larger front overlay

Boss	Spring	Part no.
INSERTA	Unsprung	72T5590BTL
Screw-on	Unsprung	72T5550.TL

Boss overlay TO (fixed dimension) 13 mm

3 hinges starting at cabinet width 1200 mm and/or 12 kg front weight

4 hinges starting at cabinet width 1800 mm and/or 20 kg front weight

11 Mounting plate for CLIP top 120° hinge

Recommendation

Fixing method	Spacing (mm)	Part no.
Screw-on	0	175H3100
EXPANDO	0	177H3100E
Knock-in	0	177H3100

Standard mounting plates, distance depends on upper front overlay

12 CLIP top centre hinge

Boss	Spring	Part no.
EXPANDO	Unsprung	78Z553ET
Screw-on	Unsprung	78Z5500T

3 hinges starting at cabinet width 1200 mm and/or 12 kg front weight

4 hinges starting at cabinet width 1800 mm and/or 20 kg front weight

13 Mounting plate for CLIP top-centre hinge

Recommendation

Fixing method	Spacing (mm)	Part no.
Screw-on	0	175H3100
EXPANDO	0	177H3100E
Knock-in	0	177H3100

Standard mounting plates with 0 mm distance

Only use cruciform mounting plates for wide aluminium frames under a 57 mm frame frieze width

a Accessories

– Opening angle stop

Opening angle	Colour	Part no.
104°	TGR	20F7051
83°	R7037	20F7011

– Distribution cable and cable end protector

Length (mm)	Colour	Part no.
8	S	Z10K800AE

Composed of:

6b 1 x Distribution cable

6d 5 x Cable end protector

Can be used as a distribution cable

For cutting to size

– Connecting node and cable end protector

Material	Colour	Part no.
Nylon	S	Z10V100E.01

Composed of:

6c 1 x Connecting node

6d 2 x Cable end protector

Tool-free assembly

– Cable holder

Material	Colour	Part no.
Nylon	W	Z10K0009

For example, for securing the distribution cable

Colour		Colour	
HGR	Light grey	WGR	White grey
SW	Silk white	S	Black
TGR	Dark grey	W	White
R7037	RAL 7037 dust grey		

Page instructions

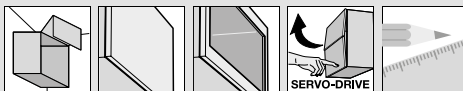
Overview – AVENTOS HF	41	Planning – SERVO-DRIVE switch	51	Assembly, removal and adjustment
Accessories – hinge set	50	SERVO-DRIVE uno – market list	706	
Mounting plates	172	Overview – assembly devices	595	Short-URL <a href="http://www.blum.com/a110">www.blum.com/a110</a>
Accessories – general	88	Reference values for door weights	692	
Planning – symmetrical	44	More technical details	686	
Planning – asymmetrical	45			
Planning – Blum distance bumper	51			



# Lift systems



- ▶ AVENTOS HF – bi-fold lift system
- ▶▶ Standard | SERVO-DRIVE

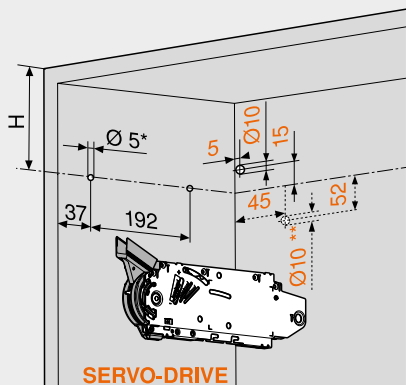


## Wooden fronts and wide alu frames

Webcode  
DQD8YM

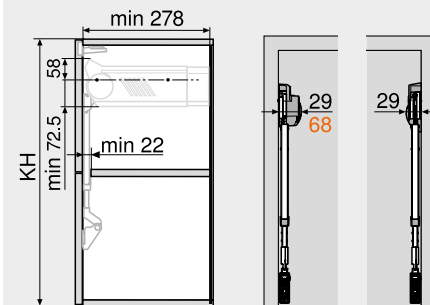
### Planning – symmetrical

#### Drilling position



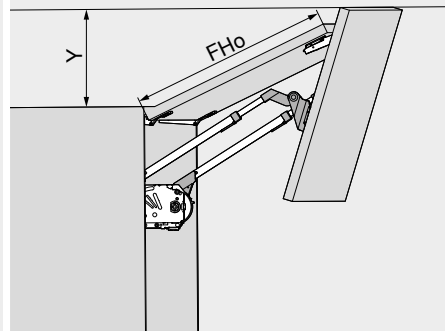
<b>Cabinet height KH (mm)</b>	<b>H (mm)</b>
480–549	KH x 0.3 – 28
550–1040	KH x 0.3 – 57
4 x chipboard screws Ø 4 x 35 mm	
Drilling for SERVO-DRIVE distribution cable, left only	
* Drilling depth 5 mm	
** Alternative drilling	

#### Space requirement



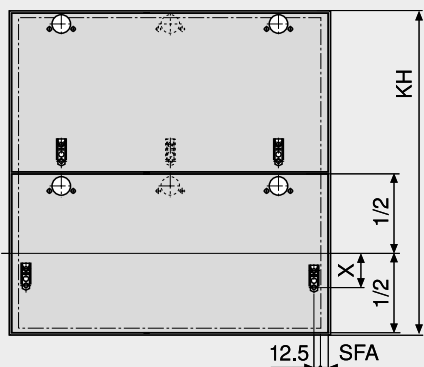
#### SERVO-DRIVE

KH Cabinet height



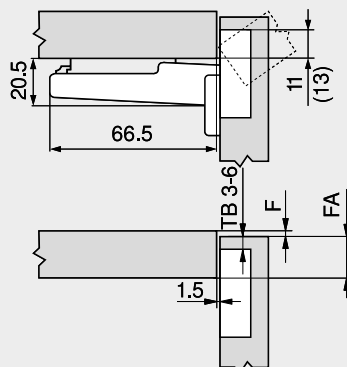
<b>Opening angle stop</b>	<b>Y (mm)</b>
Without	FHo x 0.44 + 38
104°	FHo x 0.24 + 34
83°	0
FHo	Upper front height

#### Front assembly



<b>Cabinet height KH (mm)</b>	<b>X (mm)</b>	
480–549	70	68
550–1040	47	45
SFA	Front overlay of the side panel	

#### CLIP top 120° hinge

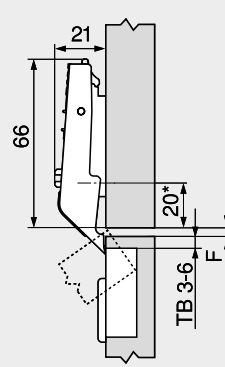


F Gap  
( ) CLIP top 120° special hinge

#### Drilling distance TB

	Front overlay FA (mm)												
MD	5	6	7	8	9	10	11	12	13	14	15	16	17
0										3	4	5	6
3							3	4	5	6			
6			3	4	5	6							
9	3	4	5	6									
MD	Mounting plate spacing (mm)												

#### CLIP top centre hinge

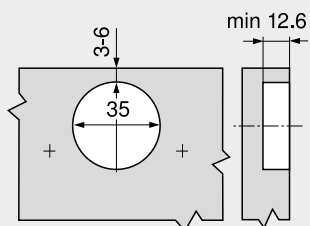


F Min. gap 1.5 mm  
\* 37 mm for cruciform mounting plates (37/32)

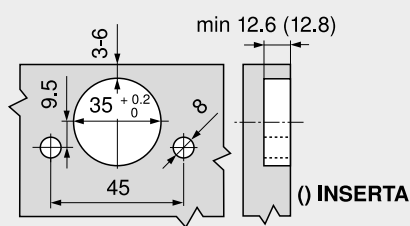
#### Drilling distance TB

	Horizontal gap between fronts F (mm)							
MD					3	4	5	6
0					6	5	4	3
3								
6								
9								
MD	Mounting plate spacing (mm)							

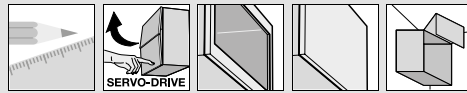
#### Screw-on



#### INSERTA | EXPANDO



**AVENTOS HF – bi-fold lift system** <>  
**Standard | SERVO-DRIVE** <<>



**Lift systems**

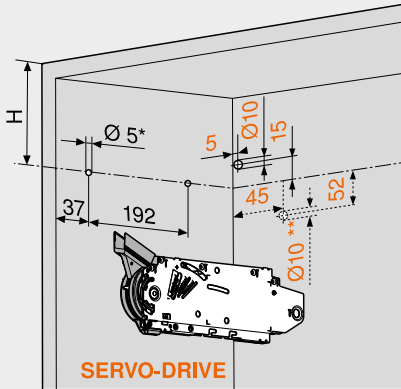


**Wooden fronts and wide alu frames**

Webcode  
**DQD8YM**

**Planning – asymmetrical**

**Drilling position**

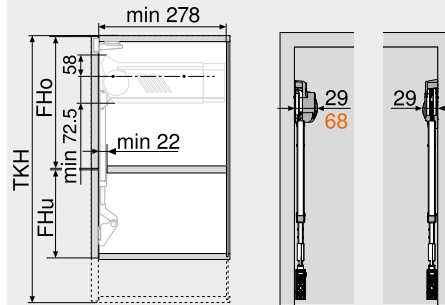


**Theoret. cabinet height TKH (mm) H (mm)**

480–549	TKH x 0.3 – 28
550–1040	TKH x 0.3 – 57

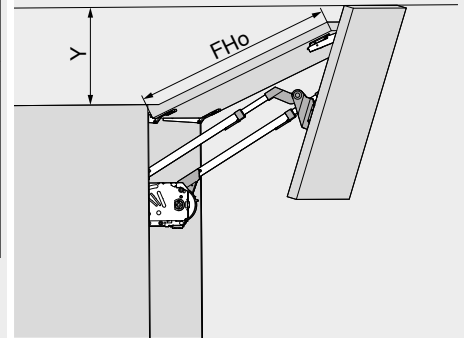
4 x chipboard screws Ø 4 x 35 mm  
 Drilling for SERVO-DRIVE distribution cable, left only  
 \* Drilling depth 5 mm  
 \*\* Alternative drilling

**Space requirement**



**SERVO-DRIVE**

TKH = FHo (mm) x 2 + gaps  
 TKH Theoretical cabinet height  
 KH Cabinet height  
 FHo Upper front height  
 FHu Lower front height

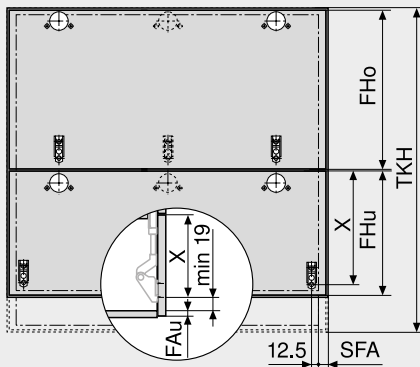


**Opening angle stop Y (mm)**

Without	FHo x 0.44 + 38
104°	FHo x 0.24 + 34
83°	0

FHo Upper front height  
 The larger front must be at the top!

**Front assembly**

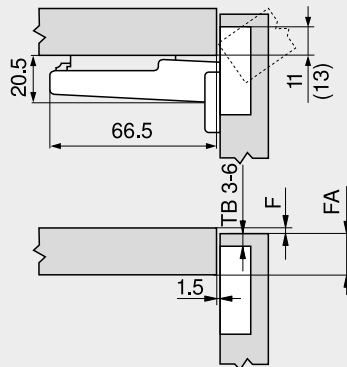


**Theoret. cabinet height TKH (mm) X (mm)**

480–549	177H3100   177H3100E   177H3100E10   177H5100   175H3100   175H4100	FHo / 2 + 70
	175H5400   177H5400E	FHo / 2 + 68
550–1040		FHo / 2 + 47
		FHo / 2 + 45

FHo Upper front height  
 FHu Lower front height  
 FAu Bottom front overlay  
 SFA Front overlay of the side panel

**CLIP top 120° hinge**



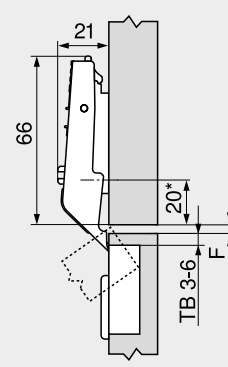
F Gap  
 () CLIP top 120° special hinge

**Drilling distance TB**

MD	Front overlay FA (mm)												
	5	6	7	8	9	10	11	12	13	14	15	16	17
0										3	4	5	6
3							3	4	5	6			
6				3	4	5	6						
9	3	4	5	6									

MD Mounting plate spacing (mm)

**CLIP top centre hinge**



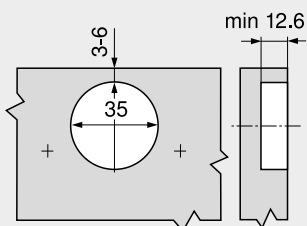
F Min. gap 1.5 mm  
 \* 37 mm for cruciform mounting plates (37/32)

**Drilling distance TB**

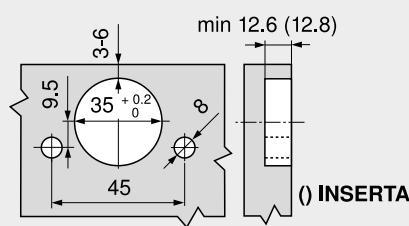
MD	Horizontal gap between fronts F (mm)							
0					3	4	5	6
3					6	5	4	3
6								
9								

MD Mounting plate spacing (mm)

**Screw-on**



**INSERTA | EXPANDO**



**Page instructions**

Overview – AVENTOS HF	41
Order specification – wooden fronts and wide alu frames	42
Planning – Blum distance bumper	51
Planning – SERVO-DRIVE switch	51

**Assembly, removal and adjustment**



Short-URL  
[www.blum.com/a110](http://www.blum.com/a110)