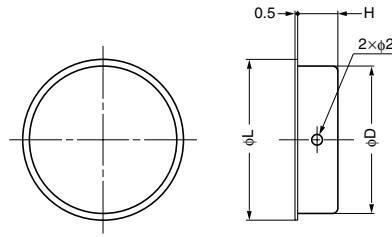


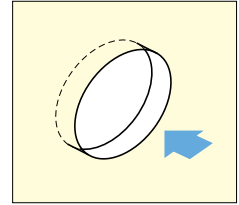
STAINLESS STEEL RECESSED PULL

STAINLESS
304
STEEL

SMH



Installation

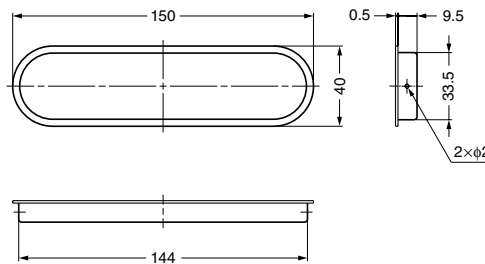


| Item Code | Item Name | Material | Finish | L | H | D | Weight | Box | Carton |
|-------------|-----------|--------------------------|--------|----|-----|------|--------|---------|-----------|
| 100-010-184 | SMH-30 | Stainless Steel (SUS304) | Satin | 30 | 7.5 | 27.5 | 4 g | 100 pcs | 3,600 pcs |
| 100-010-185 | SMH-37 | Stainless Steel (SUS304) | Satin | 36 | 8.5 | 31.5 | 6 g | 100 pcs | 3,600 pcs |
| 100-010-186 | SMH-45 | Stainless Steel (SUS304) | Satin | 46 | 8.5 | 41 | 9.5 g | 100 pcs | 2,400 pcs |
| 100-010-187 | SMH-60 | Stainless Steel (SUS304) | Satin | 60 | 9.5 | 53.5 | 15 g | 50 pcs | 1,200 pcs |
| 100-010-188 | SMH-80 | Stainless Steel (SUS304) | Satin | 80 | 9.5 | 71 | 25.5 g | 25 pcs | 500 pcs |

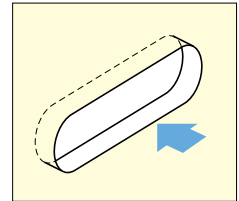
STAINLESS STEEL RECESSED PULL

STAINLESS
304
STEEL

OP-150



Installation



| Item Code | Item Name | Material | Finish | Weight | Box | Carton |
|-------------|-----------|--------------------------|--------|--------|--------|---------|
| 100-015-016 | OP-150 | Stainless Steel (SUS304) | Satin | 30 g | 30 pcs | 720 pcs |

STAINLESS STEEL RECESSED PULL

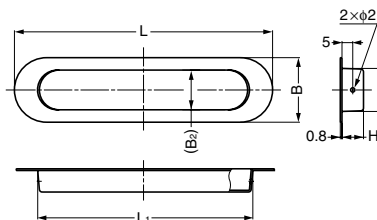
STAINLESS
304
STEEL

HN

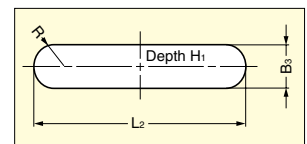


Parts Included

φ1.2×10 nail (SUS)



Cut Out Dimensions



| Item Code | Item Name | Material | Finish | L | L ₁ | H | B | B ₁ | B ₂ | L ₂ | B ₃ | H ₁ | Weight | Box | Carton |
|-------------|-----------|--------------------------|--------|-----|----------------|------|----|----------------|----------------|----------------|----------------|----------------|--------|--------|---------|
| 100-012-953 | HN-120SH | Stainless Steel (SUS304) | Satin | 120 | 100 | 10 | 30 | 20 | 18.5 | 100.5 | 20.5 | 10.5 | 19 g | 50 pcs | 500 pcs |
| 100-012-954 | HN-150SH | Stainless Steel (SUS304) | Satin | 150 | 130 | 12 | 35 | 26 | 24.5 | 130.5 | 26.5 | 12.5 | 27 g | 20 pcs | 200 pcs |
| 100-012-955 | HN-200SH | Stainless Steel (SUS304) | Satin | 200 | 170 | 13.2 | 50 | 36 | 34.5 | 170.5 | 36.5 | 13.7 | 50 g | 10 pcs | 100 pcs |
| 100-012-956 | HN-250SH | Stainless Steel (SUS304) | Satin | 250 | 220 | 13.2 | 50 | 36 | 34.5 | 220.5 | 36.5 | 13.7 | 92 g | 10 pcs | 100 pcs |