

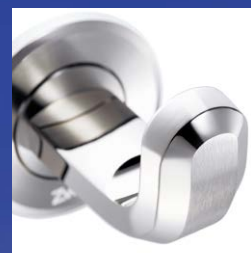
Zwei L

Zwei L is the flagship brand of Sugatsune and represents premium Japanese hardware quality.

Zwei L stands for "Zwei Lichter" in German: a dual highlight of mirror finish and lustrous satin on a faceted profile.

Manufactured from solid billets of the finest quality 316 stainless steel, **Zwei L** brings the space luxury and dazzles your eyes.

Video Link



Zwei L®

Zwei L STAINLESS STEEL HANDLE



ZL-2001

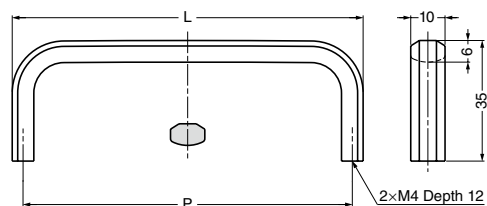


Features

- Ultrapremium Zwei L finish. Zwei L finish: Using top class polishing technology, these products combine the elegance of Satin with the deep glow of a Mirror.
- When combined with XL-2301, can be attached to glass
- Similar chamfered handles without Zwei-L polishing: XL-CU and XL-JS

Parts Included

Truss head screw M4x30 (SUS)



Item Code	Item Name	Material	Finish	L	P	Weight	Box
100-011-000	ZL-2001- 32	Stainless Steel (SUS316)	Zwei L Finish	38	32	49 g	20 pcs
100-011-001	ZL-2001- 64	Stainless Steel (SUS316)	Zwei L Finish	70	64	63 g	12 pcs
100-011-002	ZL-2001- 96	Stainless Steel (SUS316)	Zwei L Finish	102	96	75 g	12 pcs
100-011-003	ZL-2001-128	Stainless Steel (SUS316)	Zwei L Finish	134	128	89 g	10 pcs
100-011-037	ZL-2001-160	Stainless Steel (SUS316)	Zwei L Finish	166	160	108 g	10 pcs
100-011-038	ZL-2001-192	Stainless Steel (SUS316)	Zwei L Finish	198	192	130 g	6 pcs
100-011-039	ZL-2001-256	Stainless Steel (SUS316)	Zwei L Finish	262	256	164 g	6 pcs