

Zwei L STAINLESS STEEL DOOR KNOB

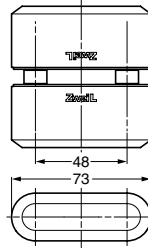
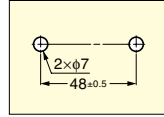


ZL-1504

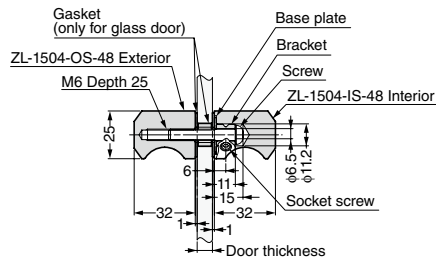
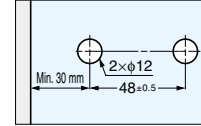


- Features**
Superior finish of Mirror/Satin.
- Parts Included**
- Bolt set for door knob
 - Allen key
 - Gasket

Cut Out Dimensions (for wood)



Cut Out Dimensions (for glass)



Item Code	Item Name	Type	Material	Finish	Door Thickness	Weight
100-170-785	ZL-1504-IS-48	Interior Knob	Stainless Steel (SUS316)	Zwei L Finish	Wooden/Metal Frame: 36 - 48, Glass: 6, 8, 10, 12	432 g
100-170-784	ZL-1504-OS-48	Exterior Knob	Stainless Steel (SUS316)	Zwei L Finish	Wooden/Metal Frame: 36 - 48, Glass: 6, 8, 10, 12	462 g
100-011-031	ZL-1504-WN-48	Back-to-Back Knob	Stainless Steel (SUS316)	Zwei L Finish	Wooden/Metal Frame: 36 - 48, Glass: 6, 8, 10, 12	989 g

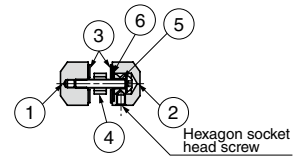
Zwei L STAINLESS STEEL DOOR KNOB



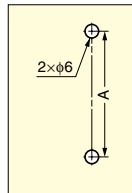
ZL-1505



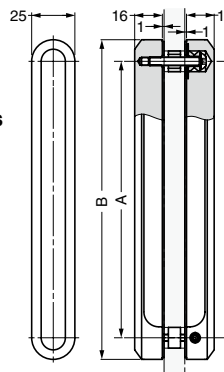
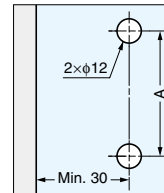
- Features**
Superior finish of Mirror/Satin.
- Parts Included**
- ZL-1505-IS: Bracket
Washer
Hexagon socket head screw M5x8
 - ZL-1505-OS: Zwei L screw M5x28, Gasket(1pc)
 - ZL-1505-WN: Bolt set ZL-1505-B, Gasket(1pc)



Cut Out Dimensions (for wood)



Cut Out Dimensions (for glass)



Item Code	Item Name	Type	Material	Finish	A	B	Weight
100-011-026	ZL-1505-IS-160	Interior Knob	Stainless Steel (SUS316)	Zwei L Finish	160	185	563 g
100-011-028	ZL-1505-IS-320	Interior Knob	Stainless Steel (SUS316)	Zwei L Finish	320	345	1023 g
100-011-025	ZL-1505-OS-160	Exterior Knob	Stainless Steel (SUS316)	Zwei L Finish	160	185	580 g
100-011-027	ZL-1505-OS-320	Exterior Knob	Stainless Steel (SUS316)	Zwei L Finish	320	345	1052 g
100-010-433	ZL-1505-WN-160	Back-to-Back Knob	Stainless Steel (SUS316)	Zwei L Finish	160	185	1177 g
100-010-434	ZL-1505-WN-320	Back-to-Back Knob	Stainless Steel (SUS316)	Zwei L Finish	320	345	2109 g

No.	Part Name	Material
①	ZL-1505-OS (Exterior)	Stainless Steel (SUS316)
②	ZL-1505-IS (Interior)	Stainless Steel (SUS316)
③	Gasket	Elastomer (TPE)
④	Rubber Ring	Chloroprene Rubber (CR)
⑤	Bracket	Stainless Steel (SUS316)
⑥	Washer	Stainless Steel (SUS316)

Bolt Set for Back-to-back Installation

Item Code	Item Name
100-011-029	ZL-1505-B

Part Name	Door	Material	Qty	Door Thickness
Hexagon Socket Button Head Screw M5x60	Wooden/Metal Frame	Stainless Steel	2 pcs	40 - 46
Hexagon Socket Button Head Screw M5x30	Glass	Stainless Steel	2 pcs	8, 10, 12
Hex Key	-	Steel	1 pc	-
Rubber Ring	Glass	Chloroprene Rubber (CR)	2 pcs	-

