

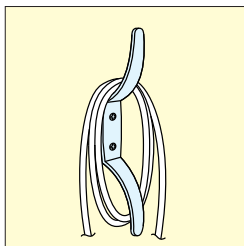
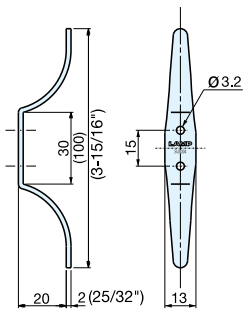
## DOUBLE HOOK

TEST METHOD

3x16 STAINLESS

STAINLESS 304 STEEL

## RB-102



Installation

- Can be used as a light duty tie up cleat.

Item No.	Weight (g)	Box (pcs)	Carton (pcs)	Material	Finish
RB-102	16	40	400	304 Stainless Steel	Satin

## ROTATING / SWING HOOK

TEST METHOD

LOAD CAPACITY 6.1 kg 13 lbs

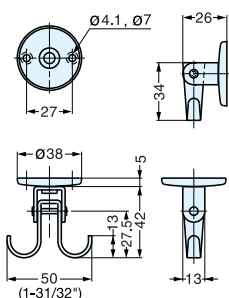
3x25 STAINLESS

STAINLESS 304 STEEL

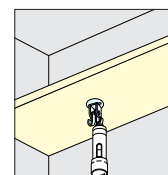
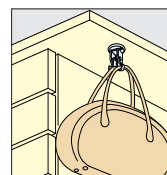
## RF-U50



PAT



- Rotates 360° and swings 180°.
- Can be mounted in various directions.



Installation

Item No.	Load Capacity (kg)	Weight (g)	Box (pcs)	Carton (pcs)	Material	Finish
RF-U50	6.1 ( 13 lbs )	40	25	250	304 Stainless Steel	Satin

## ROTATING HOOK

TEST METHOD

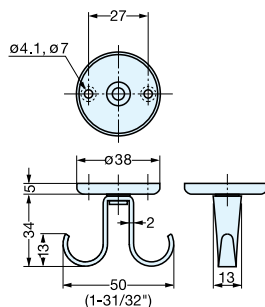
LOAD CAPACITY 3 kg 6.6 lbs

NSF

3x25 STAINLESS

STAINLESS 304 STEEL

## RF-50S



- Rotates 360°.
- Can be mounted in various directions.

Item No.	Load Capacity (kg)	Weight (g)	Box (pcs)	Carton (pcs)	Material	Finish
RF-50S	3 ( 6.6 lbs )	33	25	500	304 Stainless Steel	Satin

## HOOK

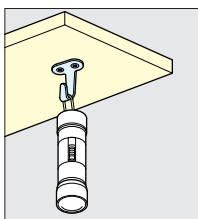
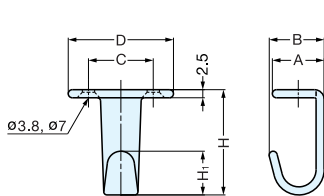
TEST METHOD

LOAD CAPACITY 8-10 kg 17.6-22 lbs

3.5x16 STAINLESS

STAINLESS 304 STEEL

## HJ



Installation

Material	Finish
304 Stainless Steel	Satin

Item No.	D	C	H	H <sub>1</sub>	A	B	Load Capacity (kg)	Weight (g)	Box (pcs)	Carton (pcs)
HJ-30S	32.5	20	32.5 ( 1-9/32" )	13.5	16	17 ( 43/64" )	8 ( 17.6 lbs )	15	30	600
HJ-50S	43.5	30	47 ( 1-27/32" )	22	21	22 ( 7/8" )	10 ( 22 lbs )	30	40	800