

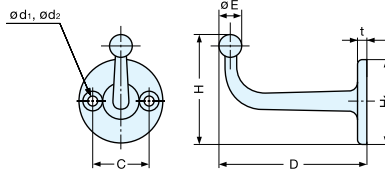
# HOOK (TITANIUM)

**LOAD CAPACITY**  
10-12 kg  
22-26 lbs

**NO SCREW**

**TITANIUM**

**FC-Ti**



• Titanium hook ideal for extreme environment.

Material	Finish
Titanium	Shotblast

Item No.	D	H	H <sub>1</sub>	t	C	d <sub>1</sub>	d <sub>2</sub>	E	Load Capacity (kg)	Weight (g)	Box (pcs)	Carton (pcs)
FC-50 Ti	47 ( 1-27/32" )	37 ( 1-29/64" )	28	3	18.5	3.3	6.5	6.5	10 (22 lbs)	17	40	240
FC-65 Ti	65 ( 2-9/16" )	44 ( 1-47/64" )	35	4	22.5	4.2	8	8	12 (26 lbs)	34	30	180

# HOOK

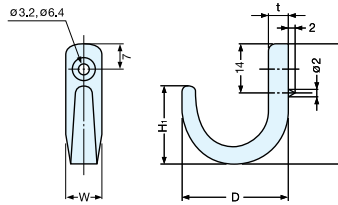
**TEST METHOD**

**LOAD CAPACITY**  
16 kg  
35 lbs

**3.1x16 STAINLESS**

**STAINLESS 304 STEEL**

**TA-3**



Material	Finish
304 Stainless Steel	Mirror

Item No.	D	W	H	H <sub>1</sub>	t	Load Capacity (kg)	Weight (g)	Box (pcs)	Carton (pcs)
TA-3S	22 ( 7/8" )	9	29 ( 1-9/64" )	16	4	16 (35 lbs)	10	30	600
TA-3L	30 ( 1-3/16" )	10	34 ( 1-11/32" )	22	5.5		19	20	400

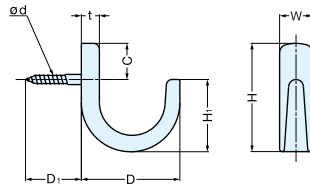
# HOOK

**TEST METHOD**

**LOAD CAPACITY**  
5-8 kg  
11-17.6 lbs

**STAINLESS 304 STEEL**

**CS, CL**



Material	Finish/Color
304 Stainless Steel	Mirror

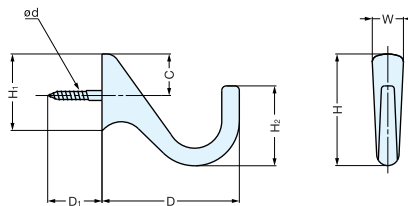
Item No.	D	D <sub>1</sub>	W	H	H <sub>1</sub>	d	C	t	Load Capacity (kg)	Weight (g)	Box (pcs)	Carton (pcs)
CS-22	22 ( 7/8" )	17	9	27 ( 1-1/16" )	15	3.1	9	4	5 ( 11 lbs)	10	30	600
CL-30	30 ( 1-3/16" )		10	33 ( 1-19/64" )	22		11	5	8 ( 17.6 lbs)	18.5	20	400

# HOOK

**LOAD CAPACITY**  
5-7 kg  
11-15.4 lbs

**STAINLESS 304 STEEL**

**BS, BL**



Material	Finish/Color
304 Stainless Steel	Mirror

Item No.	D	D <sub>1</sub>	W	H	H <sub>1</sub>	H <sub>2</sub>	d	C	Load Capacity (kg)	Weight (g)	Box (pcs)	Carton (pcs)
BS-33	33 ( 1-19/64" )	17	9	29 ( 1-9/64" )	16	20	3.1	8	5 ( 11 lbs)	15	30	600
BL-43	43 ( 1-11/16" )		10	35 ( 1-3/8" )	24	25		13	7 ( 15.4 lbs)	29	20	400