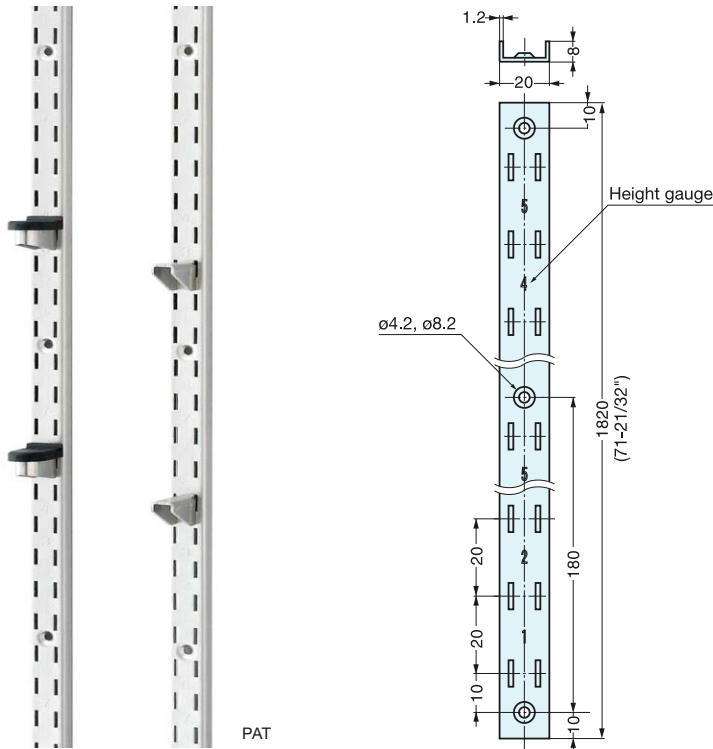


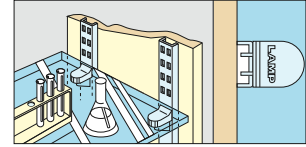
HEAVY DUTY SHELF STANDARD



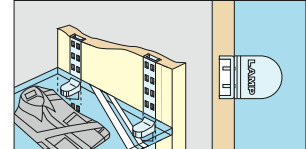
SPHL-1820



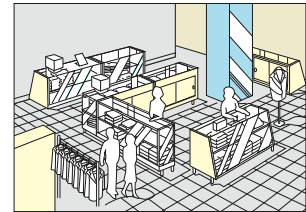
- Heavy duty shelf standard
- Easy height adjustment for changing shelf level
- Shelf support options:SPHL-25
SPHL-30



Surface Mount



Mortise Mount



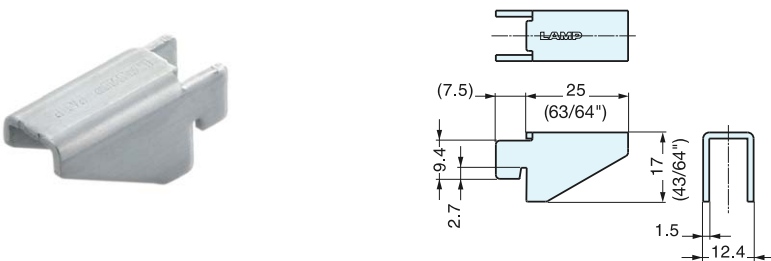
Installation

Item No. SPHL-1820	Weight (g) 500	Carton (pcs) 30	Material 304 Stainless Steel	Finish Satin
-----------------------	-------------------	--------------------	---------------------------------	-----------------

SHELF SUPPORT



SPHL-25



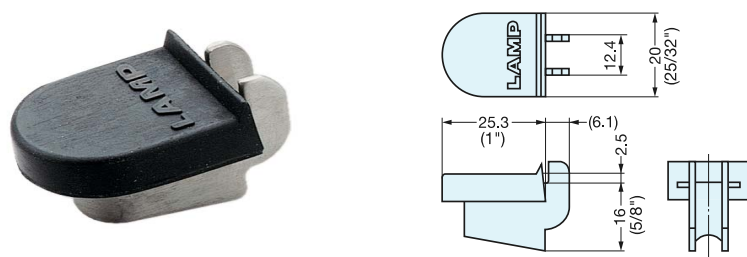
- Shelf support for SPHL-1820

Item No. SPHL-25	Load Capacity (kg) 150 / 4pcs	Weight (g) 11	Box (pcs) 200	Carton (pcs) 1200	Material 304 Stainless Steel	Finish Satin
---------------------	----------------------------------	------------------	------------------	----------------------	---------------------------------	-----------------

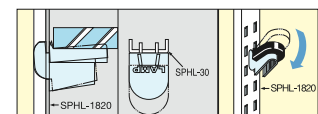
HEAVY DUTY SHELF SUPPORT



SPHL-30



- Shelf support for SPHL-1820
- Rubber pad prevents glass shelf from sliding
- Shelf support is friction retention



Installation

Item No. SPHL-30	Load Capacity (kg) 150 / 4pcs	Weight (g) 12.3	Box (pcs) 100	Carton (pcs) 1000	Material 304 Stainless Steel	Finish/Color Satin
					Elastomer	Black