

ANGLE BRACKET

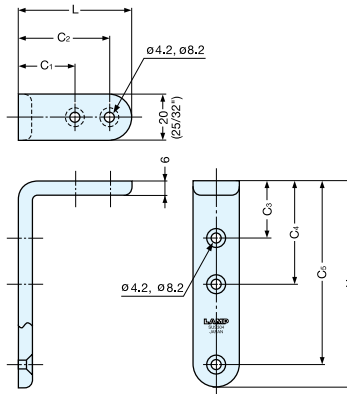
TEST METHOD

LOAD CAPACITY
10-13 kg
22-28 lbs

M4x25
STAINLESS

STAINLESS
304
STEEL

SU-B



• Stainless steel angle bracket for application where corrosion is an issue.

Material	Finish
304 Stainless Steel	Mirror

Item No.	L	H	C ₁	C ₂	C ₃	C ₄	C ₅	Holes	Load Capacity (kg)	Weight (g)	Box (pcs)	Carton (pcs)
SU-B50/M	50 (1-31/32")	90 (3-35/64")	25	40	25	45	80	5	13 (28 lbs)	106	10	100
SU-B65/M	65 (2-9/16")	120 (4-23/32")	30	55	30	60	110					
SU-B80/M	80 (3-5/32")	150 (5-29/32")	70				140			186		

ANGLE BRACKET

TEST METHOD

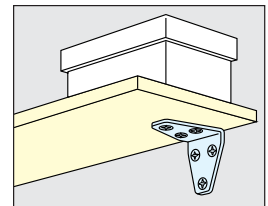
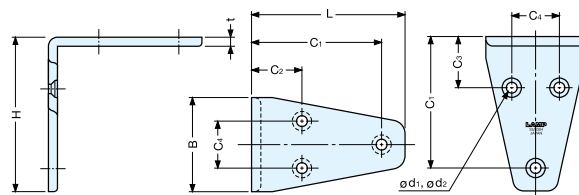
LOAD CAPACITY
8-14 kg
18-31 lbs

NSF

STAINLESS

STAINLESS
304
STEEL

SV



Installation

• Stainless steel angle bracket for application where corrosion is an issue.

Material	Finish
304 Stainless Steel	Mirror (M), Satin (S)

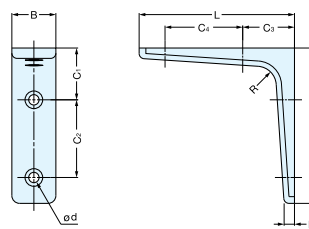
Item No.	L	H	C ₁	C ₂	C ₃	C ₄	B	t	d ₁	d ₂	Holes	Load Capacity (kg)	Weight (g)	Box (pcs)	Carton (pcs)	Screw
SV-40/M SV-40/S	40 (1-39/64")	40 (1-39/64")	34	17	17	-	25 (63/64")	3	3.3	6.5	4	8 (18 lbs)	29	40	640	3.1x20
SV-55/M SV-55/S	55 (2-13/64")	55 (2-13/64")	47	18	18	17	36.5 (1-7/16")	3	3.8	7.5	6					
SV-80/M SV-80/S	80 (3- 5/32")	80 (3- 5/32")	71	24	24	27	52 (2-3/64")	4	4.3	8.5	6		14 (31 lbs)	162	10	

ANGLE BRACKET

LOAD CAPACITY
5-11 kg
11-24 lbs

STEEL

BA



• Solid brass bracket

Material	Finish / Color
Brass	Polished / Clear

Item No.	L	H	B	C ₁	C ₂	C ₃	C ₄	h	R	d	Load Capacity (kg)	Weight (g)	Box (pcs)	Carton (pcs)	Screw
BA-35	35 (1-3/8")	35 (1-3/8")	14 (35/64")	14	15	14	15	3	4.5	3.3	5 (11lbs)	28	40	200	3.1x16
BA-45	45 (1-25/32")	45 (1-25/32")	15 (19/32")	17	20	17	20		5.5		8 (18lbs)	45	30	150	
BA-60	60 (2-23/64")	60 (2-23/64")	17 (43/64")	20	30	20	30	4	7.5	4	10 (22lbs)	80	20	100	
BA-80	80 (3-5/32")	80 (3-5/32")	19 (3/4")	28	40	28	40		10		11 (24lbs)	150	10	50	3.8x20