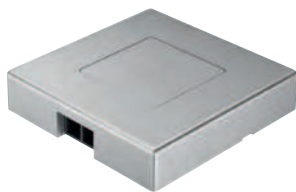


**Loox dimmer modular, surface mounted - soft on/off switching and dimming**

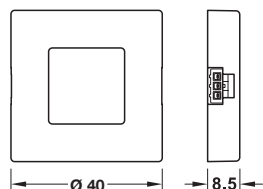
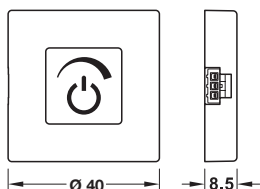


With touch function



Touchless

- > Dim. (L x W x H): 40 x 40 x 8.5 mm
- > Sensor range: 0-100 mm. Power consumption  $\leq 0.3$  W
- > Silver coloured plastic
- > Order qty: 1 pc



	Sensor range	Cat. No.
With touch	-	833.89.134
Touchless	0-80 mm	833.89.135

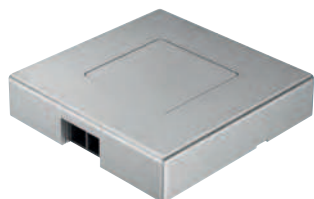


Dimming value is stored without the need for power supply (memory function)

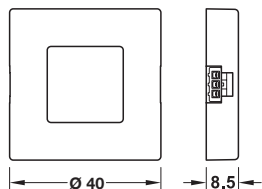
5

Lighting: Loox LED

**Loox door sensor switch modular, surface mounted - soft on/off switching and dimming**

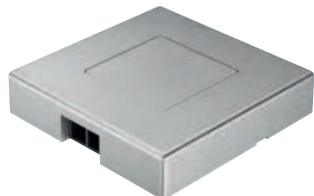


- > Dim. (L x W x H): 40 x 40 x 8.5 mm
- > Sensor range: 0-100 mm. Power consumption  $\leq 0.3$  W
- > Plastic
- > Order qty: 1 pc

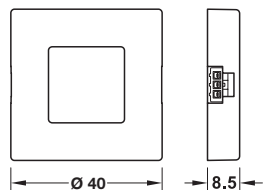


Finish	Cat. No.
Silver coloured	833.89.137

**Loox sensor switch modular, surface mounted - touchless soft on/off switching**



- > Dim. (L x W x H): 40 x 40 x 8.5 mm
- > Sensor range: 0-80 mm. Power consumption  $\leq 0.3$  W
- > Plastic
- > Order qty: 1 pc



Finish	Cat. No.
Silver coloured	833.89.136



On/off state is stored without the need for power supply (memory function)



Please order lead with snap-in connector for modular switch to Loox driver separately, shown on page 5.83