

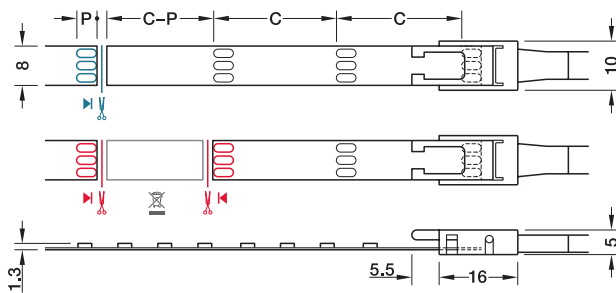
LOOX5 12V LED 2064 FLEXIBLE STRIP LIGHT MULTI-WHITE, 8 MM

Cool white and warm white LED's in the smallest of spaces. Optimal light mixture without flickering. Order the Häfele Connect Mesh system to control these strip lights using the remote control or own smartphone. 5 m length includes 600 LEDs with a wattage of 4.8W per metre.



Aluminium profiles are available to order separately, shown from page **5.184**

Loox5 12V LED 2064 flexible strip light, multi-white 8 mm



- > For surface mounting, self adhesive, 5 m length
- > Can be shortened every 50 mm
- > Voltage: 12V. Wattage: 24W (4.8W per metre)
- > Colour control only via Häfele Connect Mesh 6-way distributor with multi-white adapter, must be ordered separately
- > Dimmable
- > Degree of protection: IP20
- > Lifetime: >50,000 h
- > Width: 8 mm
- > Height: 1.3 mm
- > Lead not included, must be ordered separately
- > White plastic
- > Order qty: 1 pc (roll of 5 m length)

— Cut LED strip light to length (one contact side remains on the remainder piece; reusable)

— Connect LED strip lights (two contact sides required)

C = section length: 50 mm
P = length of contact surface: 4.0 mm

Distance	120°	2700 K	5000 K
250 mm		1025 Lx	1075 Lx
500 mm		425 Lx	445 Lx
750 mm		230 Lx	245 Lx
1000 mm		145 Lx	150 Lx

The values apply to a strip light length of 1 m

Output:	2700 K - 5000 K
Light colour:	Multi-white
Wattage (W):	4.8W per meter
Energy efficiency:	A+
Number of diodes:	2x 60 per meter
Light output (Lm/m):	425 - 465
Efficacy (Lm/W):	89 - 97
CRI Ra / R9	>90 / >90

- ! > Maximum strip length is dependant on driver wattage capacity, shown on page **5.156**
- > Maximum recommended strip light length for optimum visual light output: 4.5 m
- > Colour control only via Häfele Connect Mesh 6-way distributor with multi-white adapter; order separately, shown from page **5.178**
- > Lead must be ordered separately, shown on page **5.173**

5 12V

Multi-White

0-100%

IP20

III

F

7 YEARS

Fixings included

Length	2700-5000 K
5 m	833.74.352

YOU ALSO NEED:

- ✓
DRIVER
Page 5.156
- ✓
LEAD
Page 5.173
- ✓
SWITCH
Page 5.160-166
- ✓
CONTROL
Page 5.178-180
- OPTIONAL ACCESSORIES**
Pages 5.159, 5.167-168