

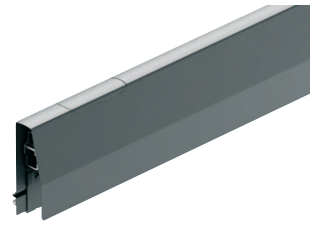
**Matrix Box P drawer sides, packed in quantities of 6 or 222 pairs**



Grey finish



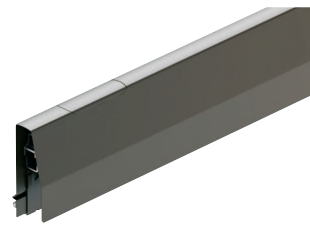
White finish



Anthracite finish



Silver finish



Bronze finish

- > Matrix Box P standard drawer sides, 92 mm high
- > With integrated rear panel holder, requires 16 or 18 mm drawer base and rear panel (not included)
- > Plastic cover caps included
- > Powder coated steel
- > Order fixing screws separately
- > Order qty: Multiples of 6 or 222 pairs



Length	Multiples of:	6 pairs	222 pairs
<b>Grey</b> (suits 16 mm drawer base and rear panel)			
270 mm		513.00.520	-
350 mm		513.00.522	-
400 mm		513.00.523	-
450 mm		513.00.524	513.00.510
500 mm		513.00.525	-
<b>White</b> (suits 16 mm drawer base and rear panel)			
270 mm		513.00.720	-
350 mm		513.00.722	-
400 mm		513.00.723	-
450 mm		513.00.724	513.00.764
500 mm		513.00.725	-
<b>Anthracite</b> (suits 18 mm drawer base and rear panel)			
270 mm		513.00.300	-
350 mm		513.00.302	-
400 mm		513.00.303	-
450 mm		513.00.304	513.00.314
500 mm		513.00.305	-
<b>Silver</b> (suits 18 mm drawer base and rear panel)			
270 mm		513.00.900	-
350 mm		513.00.902	-
400 mm		513.00.903	-
450 mm		513.00.904	513.00.910
500 mm		513.00.905	-
<b>Bronze</b> (suits 16 mm drawer base and rear panel)			
270 mm		513.00.120	-
350 mm		513.00.122	-
400 mm		513.00.123	-
450 mm		513.00.124	513.00.114
500 mm		513.00.125	-

Drawer Side Systems, Drawers and Runners: Drawer Side Systems

10



Most of the products you will find in this catalogue are available within 24 hours. However, to be able to offer the breadth of range in our collection, a small number of products have a longer lead time that is typically around 14 days. Please call 0800 171 2909 for an accurate delivery date when you see this symbol.