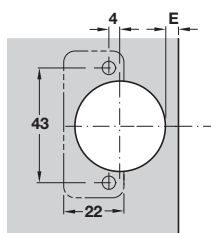


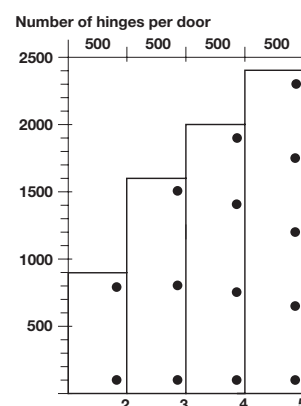
100° STAINLESS STEEL HINGE AND MOUNTING PLATES



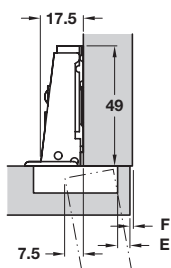
- > Opening angle 100°
- > Door to cabinet installation with slide-on system
- > 3-dimensional adjustment facility (with appropriate mounting plate)
- > With automatic closing spring
- > Grade 304 polished stainless steel
- > Order fixing screws separately
- > Order qty: 1 pc



Door thickness mm	Distance to cup E mm		
	3	4	5
15	0.5	0.5	0.5
16	0.7	0.7	0.7
17	0.8	0.8	0.8
18	1.0	1.0	1.0
19	1.2	1.2	1.2
20	1.4	1.4	1.4
Minimum gap F			



Full overlay mounting

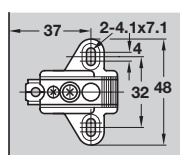


Door overlay mm	17	18	19	
	3	4	5	0
Distance to cup E mm	Mounting plate distance mm			



Fixing	Cat. No.
Screw fixing	327.20.000

Mounting plate



- > For use with stainless steel hinges 327.20.000
- > Order fixing screws separately
- > Order qty: 1 pc



Adjustment facility	Cat. No.
Side and height adjustment	327.30.030