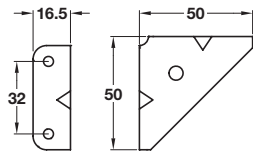


Corner gusset

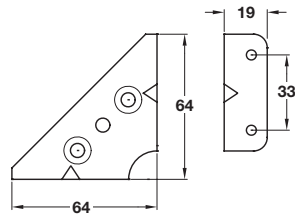
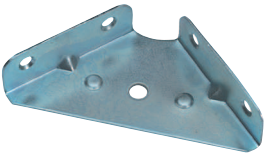


- > Mild steel (1 mm thickness)
- > Order qty: Multiples of 50 pcs



Finish	Cat. No.
Zinc-plated	260.26.921

Corner gusset



- > Mild steel (1 mm thickness)
- > Order qty: Multiples of 50 pcs



Finish	Cat. No.
Zinc-plated	260.26.922



- > Hospa screws are shown in **Section 13** pages **8-16**
- > Varianta screws are shown in **Section 13** pages **21-23**