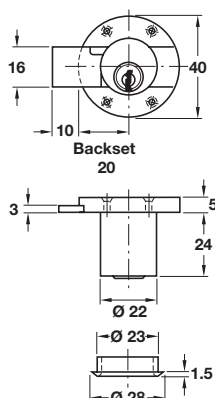


Minilock 40 rim lock



Right hand version



- > With Ø 22 mm cylinder
- > Backset: 20 mm
- > Screw fixing
- > Left handed, right handed or for drawer use
- > 5 pairs of pin tumblers = 20,000 possible key changes
- > Matt nickel-plated zinc alloy case
- > Matt nickel-plated brass cylinder
- > Accessories: 2x keys and 1x cylinder rosette
- > Order qty: 1 pc

230.19.614 REPLACED BY 230.19.210
 230.19.605 REPLACED BY 230.19.200
 230.19.623 REPLACED BY 230.19.220
 230.19.810 REPLACED BY 230.19.211
 230.19.712 REPLACED BY 230.19.201
 230.19.918 REPLACED BY 230.19.221



Standard keying

Version	Left	Right	Drawer
Random key changes (no master key possible)			
	230.19.210	230.19.200	230.19.220
Keyed alike (master key possible - custom master keying below)			
Key change H1	230.19.211	230.19.201	230.19.221
Custom master keying*			
			Cat. No.
With general master key system			230.19.699



Spacer plates are available separately if required

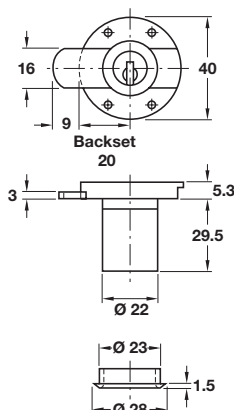


*For master key systems please state left hand, right hand or drawer lock, how many random keys and how many master keys are required

Minilock 40 rim lock



Right hand version



- > With Ø 22 mm Kaba® 8 cylinder
- > Backset: 20 mm
- > Screw fixing
- > Left handed, right handed or for drawer use
- > 8 pairs of pin tumblers = 100,000 possible key changes
- > Matt nickel-plated zinc alloy case
- > Matt nickel-plated brass cylinder
- > Accessories: 2x keys and 1x cylinder rosette
- > Order qty: 1 pc



Standard keying

Version	Left	Right	Drawer
Random key changes (no master key possible)			
	230.13.612	230.13.603	230.13.621
Keyed alike (master key possible - custom master keying below)			
Key change K1	230.13.818	230.13.710	230.13.916
Custom master keying*			
			Cat. No.
With master key system			230.13.698
With general master key system			230.13.699

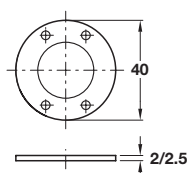
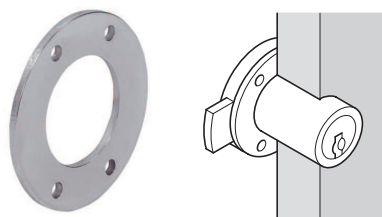


Spacer plates are available separately if required



*For master key systems please state left hand, right hand or drawer lock, how many random keys and how many master keys are required

Minilock 40 spacer plate



- > Two sizes for Ø 18 mm or Ø 22 mm cylinders
- > Steel or plastic
- > Order qty: Multiples of 10 pcs

For Ø 18 mm cylinder	Cat. No.
Light grey plastic, 2.5 mm thick	230.07.990
For Ø 22 mm cylinder	Cat. No.
Nickel-plated steel, 2.0 mm thick	230.13.998



- > A guide to master key and general master key systems is shown on page 7
- > Strike plates are shown on pages 93-95
- > Hospa screws are shown in Section 13 pages 8-16

PAGE AMENDED
12.03.18/1

SALES DEPARTMENT 0800 171 2909

TECHNICAL SUPPORT 0800 171 2908

Section **8** | Page **33**