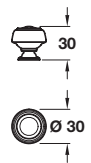


KANE knob



Product is subject to variations in finish due to the finishing and manufacturing process of certain materials

- > 1x 8/32 x 1" (non-metric) screw included
- > Zinc alloy
- > Order qty: 1 pc

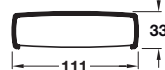
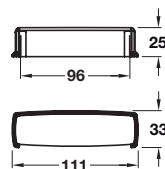
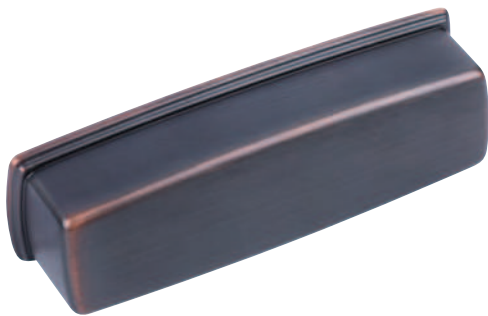


Finish	Cat. No.
Oil rubbed bronze	133.50.609



All handles on this page include 8/32 x 1" (non-metric) screws. If you require a different length order non-metric cut off screw Cat. No. 022.24.881 shown on page 4.253

KANE cup handle



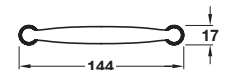
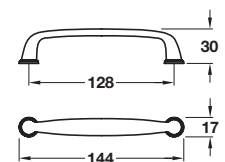
Product is subject to variations in finish due to the finishing and manufacturing process of certain materials

- > 2x 8/32 x 1" (non-metric) screws included
- > Zinc alloy
- > Order qty: 1 pc



Finish	Cat. No.
Oil rubbed bronze	133.50.140

KANE pull handle



Product is subject to variations in finish due to the finishing and manufacturing process of certain materials

- > 2x 8/32 x 1" (non-metric) screws included
- > Zinc alloy
- > Order qty: 1 pc



Finish	Cat. No.
Oil rubbed bronze	133.50.340